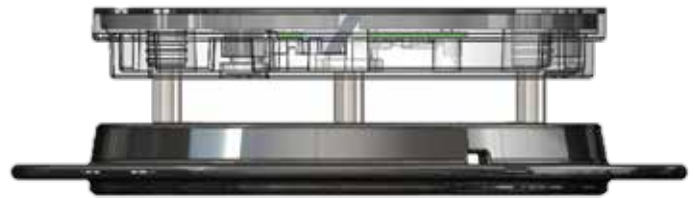
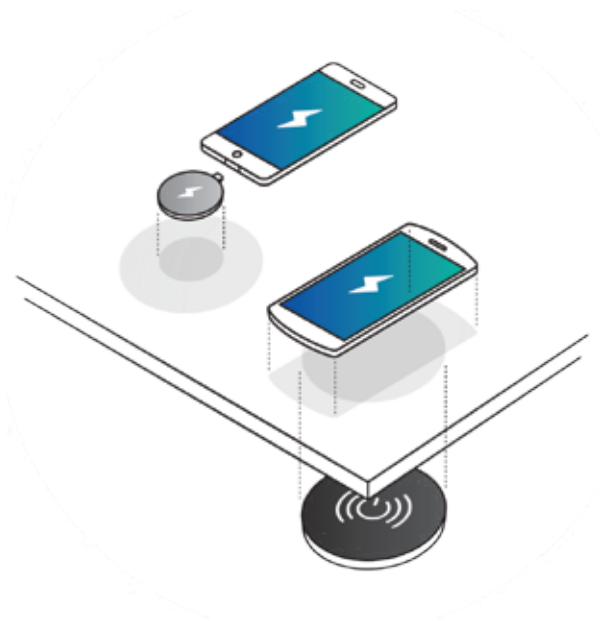


# CHARGESPOT

## PRODUCT SHEET

---



ChargeSpot installs in most surfaces and allows users to charge their mobile devices wirelessly. It installs beneath the surface providing a seamless installation, with the transmitter hidden from sight. The unbroken surface works well in design centric environments.

Power Output	5 watts
Product Dimensions	3½" (89mm) Diameter x ½" (13mm) Height
Inputs / Connectors	Power supply, micro-USB
Power Supply	19V DC 520mA
Wireless Power Protocols	WPC1.1 and PMA3.0
Applicable Surface Depths	½" (13mm) to 2½" (64mm)